



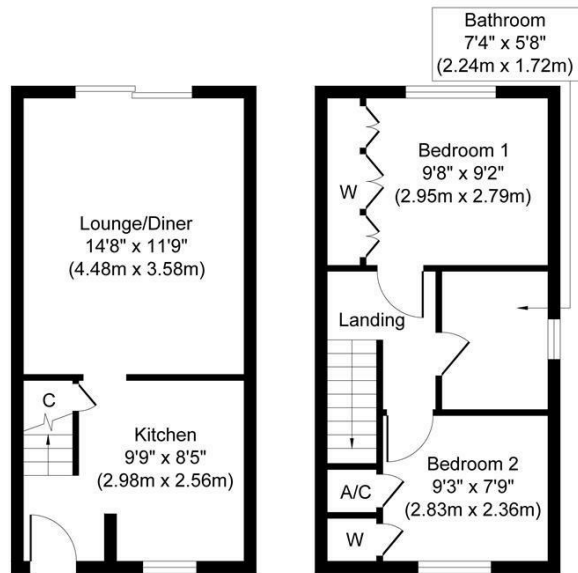
## 8 OZIERS

ELSENHAM, CM22 6LS

£1,350

A lovely two bedroom end of terrace with a spacious garden, 2 parking spaces and pets are considered.





**Ground Floor**  
 Approximate Floor Area  
 289 sq. ft  
 (26.88 sq. m)

**First Floor**  
 Approximate Floor Area  
 289 sq. ft  
 (26.88 sq. m)

Whilst every attempt has been made to ensure the accuracy of the floor plan contained here, measurements of doors, windows, rooms and any other items are approximate and no responsibility is taken for any error, omission, or mis-statement. The measurements should not be relied upon for valuation, transaction and/or funding purposes. This plan is for illustrative purposes only and should be used as such by any prospective purchaser or tenant. The services, systems and appliances shown have not been tested and no guarantee as to their operability or efficiency can be given.  
 Copyright V360 Ltd 2025 | [www.houseviz.com](http://www.houseviz.com)



Energy Efficiency Rating		Current	Potential
Very energy efficient - lower running costs			
(92 plus) A			
(81-91) B			
(69-80) C			76
(55-68) D			
(39-54) E		46	
(21-38) F			
(1-20) G			
Not energy efficient - higher running costs			
England & Wales		EU Directive 2002/91/EC	

Agents Note: Whilst every care has been taken to prepare these particulars, they are for guidance purposes only. All measurements are approximate and are for general guidance purposes only and whilst every care has been taken to ensure their accuracy, they should not be relied upon and potential buyers/tenants are advised to recheck the measurements

The Personal Property Shop Ltd  
 Lettings  
 Brook Farm, Braintree Road  
 Wethersfield  
 Braintree  
 Essex  
 CM7 4BX

01279 940840  
[info@thepersonalpropertyshop.co.uk](mailto:info@thepersonalpropertyshop.co.uk)  
<https://personalpropertyshop.co.uk/>

